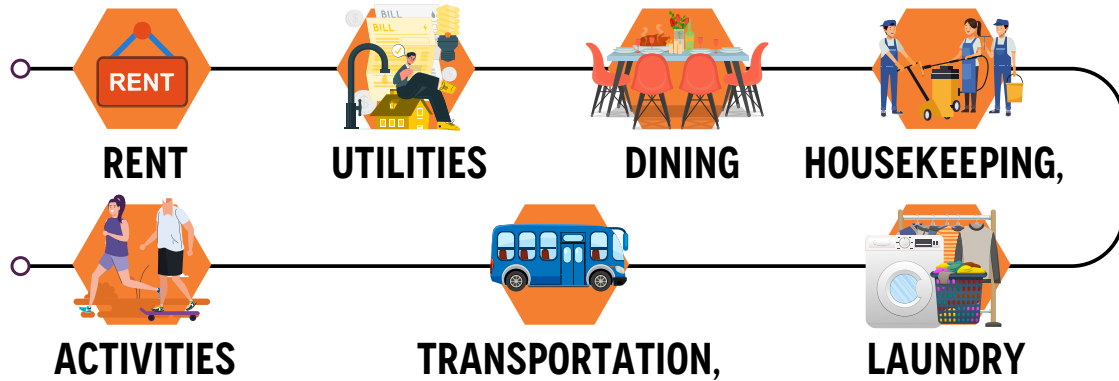


UNDERSTANDING RATES & LEVELS OF CARE IN ASSISTED LIVING

BASE RATE



AL Studios
400-500 SQ. FT

\$4,700-\$5,500

MC Studio
\$6,500-\$7,450

BASE RATE OF ROOMS VARIES BASED ON SQUARE FOOTAGE AND LOCATION IN THE BUILDING.

AL One Bedroom
550-640 SQ. FT

\$5,000-\$6,700

MC One Bedroom
\$7,400-\$11,000

BASE RATE OF ROOMS VARIES BASED ON SQUARE FOOTAGE AND LOCATION IN THE BUILDING.

AL Two Bedrooms
700-850 SQ. FT

\$6,800-\$9,500

MC Shared Rooms
\$5,200-\$6,200

BASE RATE OF ROOMS VARIES BASED ON SQUARE FOOTAGE AND LOCATION IN THE BUILDING.



Creating New Hope
Senior Living Advisors

UNDERSTANDING RATES & LEVELS OF CARE IN ASSISTED LIVING

PERSONAL CARE COST

*Personal Care Rates (levels of care, a la carte, points, med management program):
Each community has their own personal care rate, range, and model.*

LEVELS OF CARE EXAMPLE

\$900-\$1,200

LEVEL 1

Medication Management, bathing assistance, minimal hands-on care.



\$1,900-\$2,500

LEVEL 2

Medication Management, bathing assistance, cognitive support, daily dressing, grooming assistance, help getting to the bathroom, escorting to activities and meals.



\$2,900-\$3,500

LEVEL 3

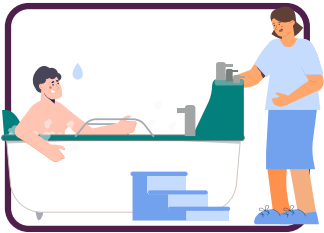
Medication Management, bathing assistance, cognitive support, daily dressing, full grooming assistance, full toileting support, escorting to activities and meals, eating assistance, ambulating, full care coordination and hospice.



Creating New Hope
Senior Living Advisors

UNDERSTANDING RATES & LEVELS OF CARE IN ASSISTED LIVING

A LA CARTE CARE EXAMPLE



Bathing Assistance 2x/week
\$380/MONTH



Morning Dressing
\$460/MONTH



Grooming
\$310/MONTH



Continence Care
\$995/MONTH



Escort Assistance
\$700/MONTH



Emergency Pendant or
Wander Guard
\$55-\$65/MONTH




UNDERSTANDING RATES & LEVELS OF CARE IN ASSISTED LIVING

PERSONAL CARE POINTS

CARE POINTS EXAMPLE

Cost of care points range from
\$12.00 PER POINT TO \$25.00,
depending on community.



 CARE LEVELS	 CARE LEVEL POINTS	 COST PER MONTH
LEVEL 1	0 - 30	\$1,000
LEVEL 2	31 - 60	\$1,500
LEVEL 3	61 - 90	\$1,800
LEVEL 4	91 - 120	\$2,800
LEVEL 5	121 - 150	\$3,000
LEVEL 6	151 AND ABOVE	\$3,500

POINTS + LEVEL OF CARE EXAMPLE

UNDERSTANDING RATES & LEVELS OF CARE IN ASSISTED LIVING

ASSESSMENT EXAMPLE FOR CARE BASED ON POINTS



ASSESSMENT CATEGORY

POINTS

MEDICATION ASSISTANCE

Meds 1 Time daily	5
Meds 2 Times daily	10
Meds 1 Time daily	15
Meds 2 Times daily	20

GROOMING

Level of assistance minimal	5
Level of assistance moderate	8
Level of assistance extensive	10

MOBILITY

Level of assistance minimal	5
Level of assistance moderate	10
Level of assistance extensive	10

UNDERSTANDING RATES & LEVELS OF CARE IN ASSISTED LIVING

ASSESSMENT EXAMPLE FOR CARE BASED ON POINTS

TOILETING



Level of assistance minimal	5
Level of assistance moderate	10
Level of assistance extensive	15

TRANSFERRING



Level of assistance minimal	5
Level of assistance moderate	7
Level of assistance extensive	10



RESIDENTIAL CARE HOMES

LICENSED FOR 6 RESIDENTS, PRIVATE ROOMS, TWO CAREGIVERS TYPICALLY ON STAFF DURING THE DAY

Residential Care Homes usually have fixed pricing ranging from **\$4,500-\$7,500**. You will generally see an increase of **\$500-\$1000** when a resident goes on hospice. Since each care home is generally individually owned and operated, you do have some negotiating room.



Creating New Hope
Senior Living Advisors